



India Meteorological Department
Earth System Science Organisation
(Ministry of Earth Sciences)

BULLETIN NO. : 29 (ARB/02/2020)

TIME OF ISSUE: 2200 HOURS IST

DATED: 03.06.2020

FROM: INDIA METEOROLOGICAL DEPARTMENT (FAX NO. 24643965/24699216/24623220)

TO: CONTROL ROOM, NDM, MINISTRY OF HOME AFFAIRS (FAX.NO. 23092398/23093750)

CONTROL ROOM NDMA (FAX.NO. 26701729)

CABINET SECRETARIAT (FAX.NO.23012284, 23018638)

PS TO HON'BLE MINISTER FOR S & T AND EARTH SCIENCES (FAX NO.23316745)

SECRETARY, MOES (FAX NO. 24629777)

H.Q. (INTEGRATED DEFENCE STAFF AND CDS) (FAX NO. 23005137/23005147)

DIRECTOR GENERAL, DOORDARSHAN (23385843) DIRECTOR GENERAL, AIR (23421101, 23421105, 23421219)

PIB MOES (FAX NO. 23389042)

UNI (FAX NO. 23355841)

D.G. NATIONAL DISASTER RESPONSE FORCE (NDRF) (FAX NO. 26105912, 2436 3260)

DIRECTOR, PUNCTUALITY, INDIAN RAILWAYS (FAX NO. 23388503)

CHIEF SECRETARY, KERALA (FAX NO. 0471-2327176)

ADMINISTRATOR, LAKSHADWEEP ISLANDS (FAX NO. 0413-262184)

ADMINISTRATOR, UNION TERRITORY OF DAMAN & DIU (0260-2230775)

ADMINISTRATOR, UNION TERRITORY OF DADRA NAGAR HAVELI (0260-2230775)

CHIEF SECRETARY, KARNATAKA (FAX NO. 080-22258913)

CHIEF SECRETARY, GOA (FAX NO. 0832-2415201)

CHIEF SECRETARY, MAHARASHTRA (FAX NO. 022- 22028594)

CHIEF SECRETARY, GUJARAT (FAX NO. 079-23250305)

CHIEF SECRETARY, DAMAN & DIU (FAX NO. 0260-2230775)

CHIEF SECRETARY, DADRA & NAGAR HAVELI (FAX NO. 0260-2645466)

Sub: **Deep Depression 'NISARGA' over interior Maharashtra**

The Cyclonic Storm '**NISARGA**' over interior Maharashtra moved north-northeastwards with a speed of about 25 kmph during past 06 hours, weakened into a **Deep Depression** and lay centred at 2030 hours IST of today the 03rd June, 2020 over Madhya Maharashtra, near latitude 19.6°N and longitude 74.0°E, 40 km south of Nasik, 140 Km west-southwest of Aurangabad and 120 km north-northeast of Pune.

It is very likely to move northeastwards and weaken into a Depression during next 12 hours.

Forecast track and intensity are given in the following table:

Date/Time(IST)	Position (Lat. °N/ long. °E)	Maximum surface (Kmph)	sustained wind speed	Category of cyclonic disturbance
03.06.20/2030	19.6/74.0	55-65	gusting to 75	Deep Depression
03.06.20/2330	19.7/74.3	50-60	gusting to 70	Deep Depression
04.06.20/0530	20.5/75.0	40-50	gusting to 60	Depression
04.06.20/1130	21.1/75.5	30-40	gusting to 50	Depression

Warnings:

(i) **Rainfall:**

- Light to moderate rainfall at most places with heavy to very heavy falls at isolated places very likely over north Madhya Maharashtra, Marathawada, Vidarbha and south Madhya Pradesh during next 24 hours.
- Light to moderate rainfall at most places with heavy to very heavy falls at isolated places over south Konkan & Goa and south Gujarat region during next 12 hours.

Spatial rainfall distribution: Isolated: <25%, A few: 26-50%, Many: 51-75%, Most: 76-100%

Rainfall amount (mm): Heavy rain: 64.5 – 115.5, Very heavy rain: 115.6 – 204.4, Extremely heavy rain: 204.5 or more.

(ii) Wind warning

- Gale wind, speed reaching 55-65 kmph gusting to 75 kmph, is prevailing over Madhya Maharashtra (North Pune, Nasik and Aurangabad Districts). It is likely continue for next 06 hours and gradually decrease becoming 35-45 gusting 55 by early morning of 4th June.
- Squally wind, speed reaching 40-50 kmph gusting to 60 kmph likely along and off Maharashtra coast during next 06 hours and gradually improve thereafter.

(iii) Sea condition

- The Sea condition will be rough to very rough along & off Maharashtra coasts during next 06 hours and gradually improve thereafter.

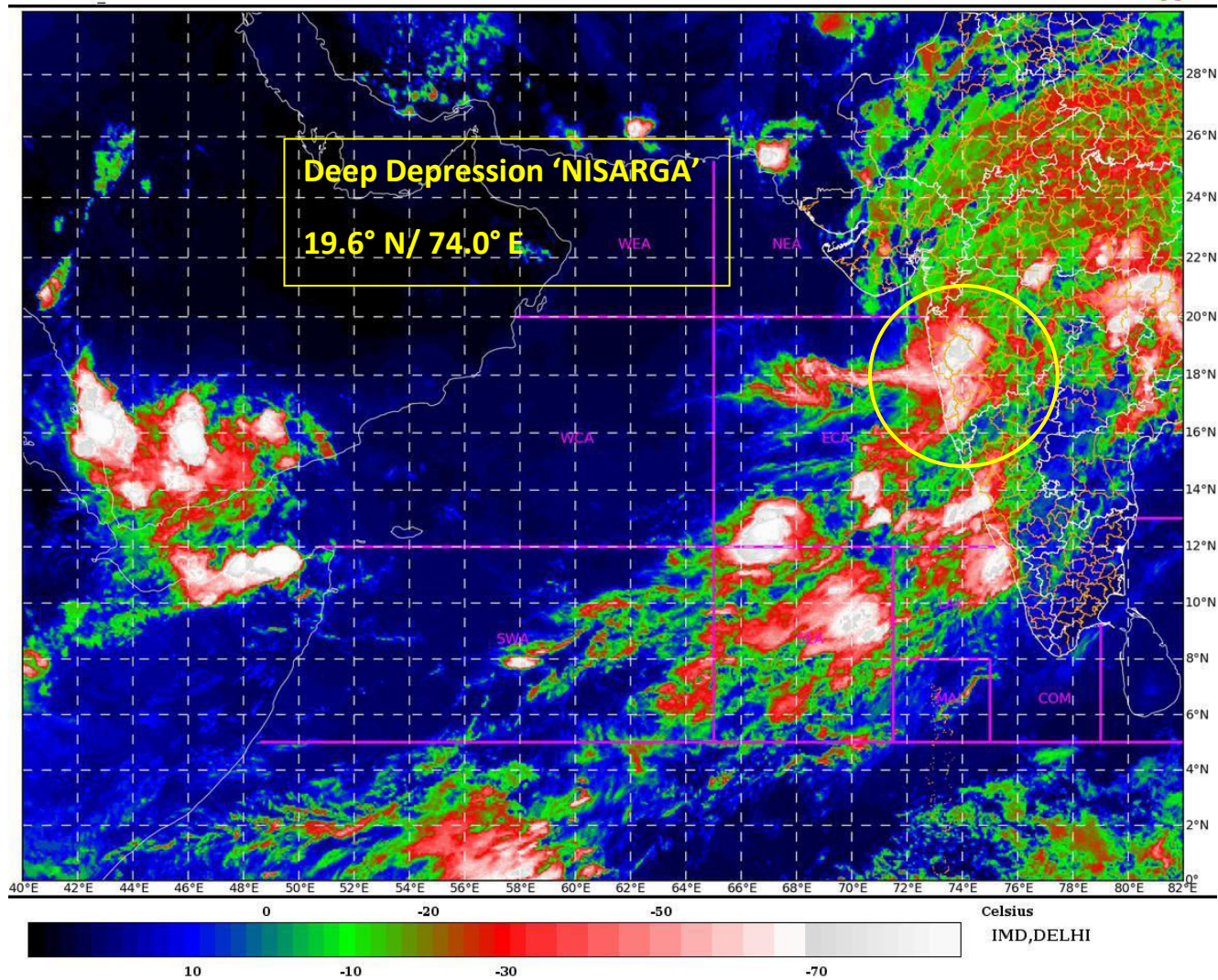
(iv) Fishermen Warning

Fishermen are advised not to venture into Northeast Arabian Sea and along & off Goa-Maharashtra-south Gujarat coasts during next 12 hours.

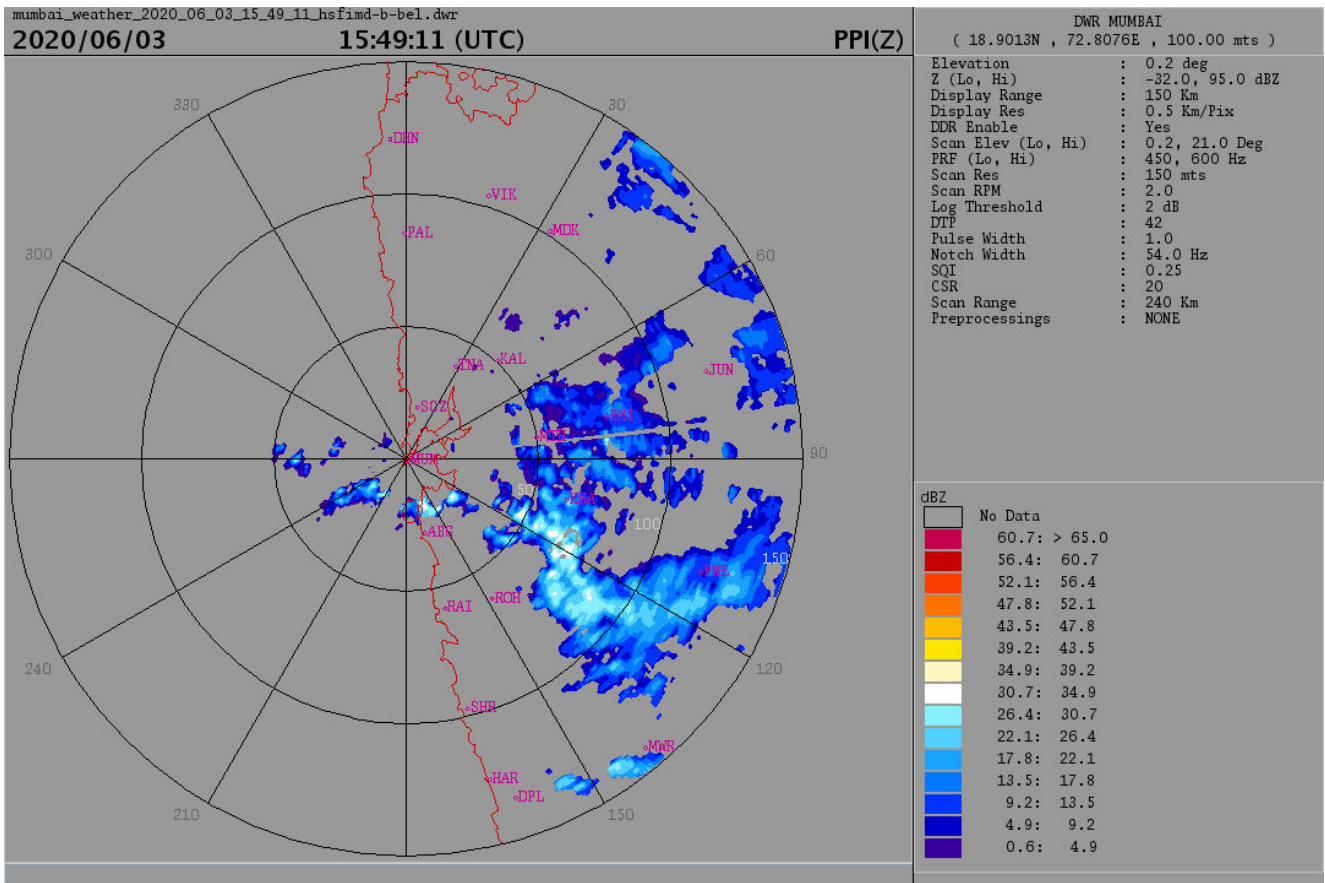
The next bulletin will be issued at 0230 hrs IST of the 04th June, 2020.

(V R Durai)
Scientist-E, RSMC, New Delhi

Copy to: ACWC Chennai/ ACWC Mumbai/ MC Goa/ MC Bengaluru/ CWC Ahmedabad/ Thiruvananthapuram.

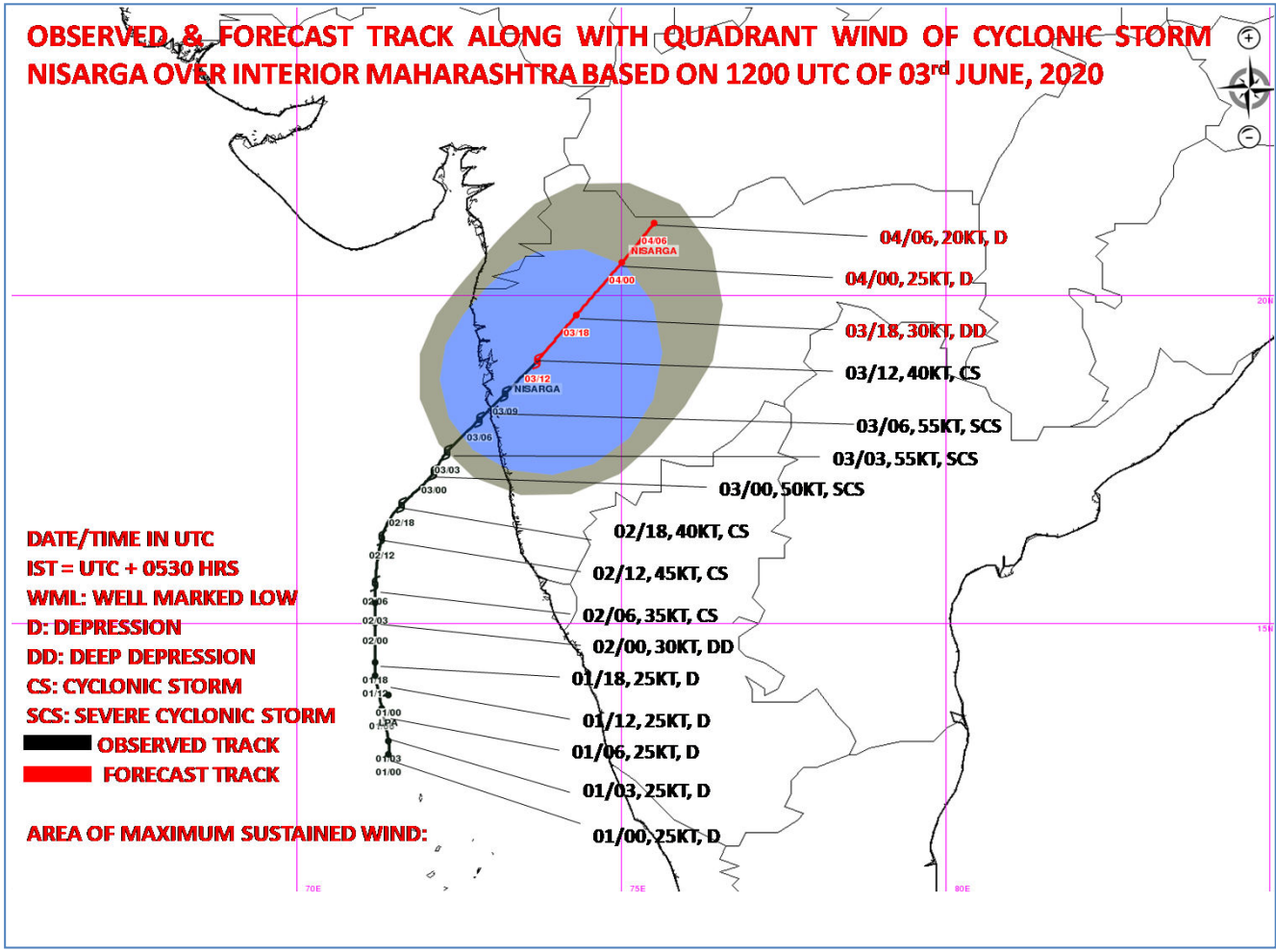
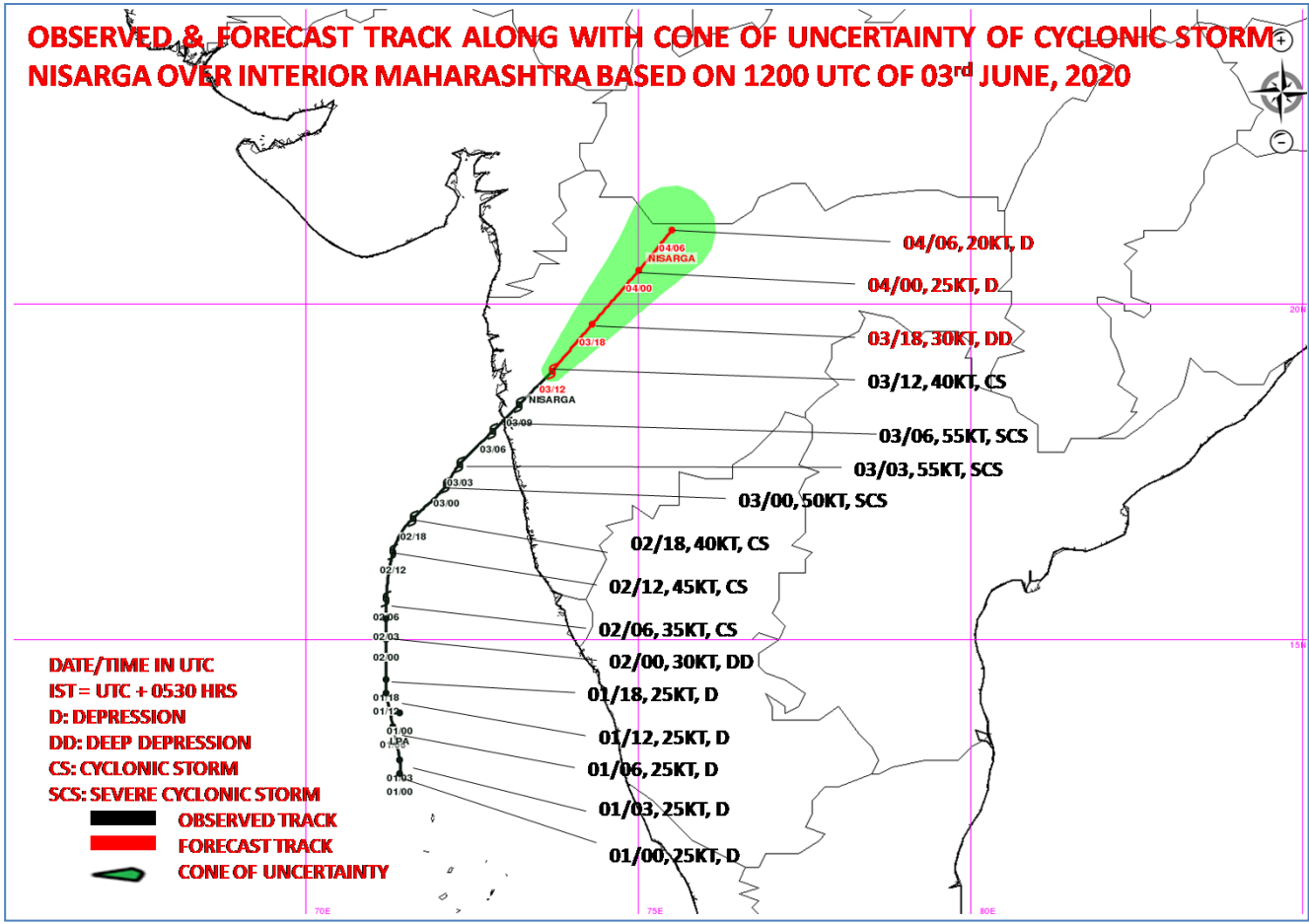


Spatial rainfall distribution: Isolated: <25%, A few: 26-50%, Many: 51-75%, Most: 76-100%
Rainfall amount (mm): Heavy rain: 64.5 – 115.5, Very heavy rain: 115.6 – 204.4, Extremely heavy rain: 204.5 or more.



DOPLER WEATHER RADAR MUMBAI AT 15:49:13 HOURS IST OF 03.06.2020

Spatial rainfall distribution: Isolated: <25%, A few: 26-50%, Many: 51-75%, Most: 76-100%
Rainfall amount (mm): Heavy rain: 64.5 – 115.5, Very heavy rain: 115.6 – 204.4, Extremely heavy rain: 204.5 or more.



Spatial rainfall distribution: Isolated: <25%, A few: 26-50%, Many: 51-75%, Most: 76-100%
 Rainfall amount (mm): Heavy rain: 64.5 – 115.5, Very heavy rain: 115.6 – 204.4, Extremely heavy rain: 204.5 or more.